



Industrial anti-corrosion solutions



Committed to your satisfaction

A solution for every customer...

We've built up a relationship of confidence with our customers, based on permanent contact and a commitment to provide solutions to their problems, even the most specific.

... irrespective of their activity sector

SAFI is active in the chemical, environment, logistics, crop spraying, water treatment and mining sectors.

We also supply the most demanding industries, such as the aerospace, naval and nuclear sectors.

Quality and reliability

SAFI tests 100% of the products leaving its production lines.

For you, this means reliability, less maintenance and shutdown time for your processes.

SAFI valves are manufactured in compliance with European directives and standards: 97/23/EC, 73/23/EEC, 89/392/EEC amended 98/37/EC, ACS, accidental emissions ISO15848, TA-LUFT-VDI2440.

Our expertise: consulting and new developments

Co-design: the user is our first priority

Our primary objective is to provide the appropriate technical solutions for our customers. For this reason, in the field, our design specialists work closely with the end users, to ensure that their requirements are properly defined.

New technical development: R&D is the key

We consider that all the experiences we had with customers will help us to participate to your performance. Our engineers and technicians were trained in industries such as the automotive, mechanical engineering and plastics industries, and they contribute, everyday, to our ongoing progress action.

The SAFI R&D department provides new technical developments for process optimisation.

↓ A dedicated design department

Our design department works very closely with those of our customers. Using the most sophisticated CAD systems, the department confirms the appropriate technical options and hardware reliability very early in the production cycle.

Our strengths: flexibility and proximity

Manufacturer flexibility

SAFI is currently one of the few plastic valves manufacturers to offer manufacturing to customer requirements. SAFI offers a range of more than 7000 items and a production facility that can produce small or large quantities, so that the requirements and specific needs of all customers can be met.

Proximity of the distributor

Through our sales force and our distribution network, the SAFI brand is present on all continents. Our sales staff are in permanent contact with our customers, to monitor their projects and provide the technical advice that they need.



For almost 50 years, SAFI has been developing, manufacturing and marketing anti-corrosion valves in thermo-plastic materials, specifically dedicated to industrial applications.

Ball valves, butterfly valves and diaphragm valves, in materials that resist corrosive, dangerous or toxic fluids (GRPP, PVDF, UPVC, CPVC, PE, PP, PP ATEX or PVDF ATEX)...

Today, this broad range of products and materials has made SAFI the French reference for plastic industrial taps and valves.

Customers that place their confidence in us :

- **Chemical:** Arkema, Solvay, BASF, Rhodia, Arcelor Mittal...
- **Fluids storage and transport:** Linpac Allibert, Promens, Brenntag...
- **Energy/mining:** Areva, Kazatomprom, EDF, Honeywell, Codelco, Outotec...
- **Crop spraying:** Kuhn Blanchard, John Deere, Exel Industries group...
- **Naval and Yachting industry:** Sunseeker, Royal Navy, Palmer Johnson...
- **Water treatment:** Degrémont, Véolia, Ondéo...

SAFI brand:

« Our experience
dedicated to your
performance »



Our range

Valves

Non-return valves

Strainers

Accessories

Ball valves

in GRPP (Glass Reinforced PolyPropylene)



Flanged compact
DN15 (1/2") to DN50 (2")



DN80 (3") and DN100 (4")



DN150 (6") FULL BORE



BSP threaded
DN15 (1/2") and DN20 (3/4")



Double union
DN15 (1/2") and DN20 (3/4")



Double union
DN25 (1") to DN50 (2")



3-way vertical
DN15 (1/2") and DN20 (3/4")



3-way vertical
DN25 (1") to DN50 (2")



3/4/5-way horizontal
DN50 (2")



IBC valve



For tank or approved container

SPECIFICATIONS :

Pressure:	PN10
Temperature:	-10°C to +100°C
Dimensions:	
2-way:	DN15 to DN150 (1/2" to 6")
3-way:	DN15 to DN100 (1/2" to 4")
4-way:	DN50 (2")
5-way:	DN50 (2")
Fittings:	
Flanges in compliance with standards	DIN PN10, ANSI 150, BS10/table D
Removable union nuts:	for bonding, welding, end-to-end welding, tapped, threaded
Seat:	PTFE
O-ring seals:	EPDM, FKM, FEP/FFKM
Options :	Some flanged valves are available in PP ATEX Electric or pneumatic actuated

in PVDF (PolyVinylidene Fluoride)



Flanged compact
DN15 (1/2") to DN50 (2")



DN80 (3") and DN100 (4")



DN150 (6") FULL BORE



Sandwich 1/2" and 3/4"



3-way vertical
Sandwich 1/2" and 3/4"



Double union
DN25 (1") to DN50 (2")



3-way vertical
DN25 (1") to DN50 (2")

SPECIFICATIONS:

Pressure:	PN10
Temperature:	-20°C to +120°C
Dimensions:	
2-way:	DN15 to DN150 (1/2" to 6")
3-way:	DN50 (2")
Fittings:	
Flanges in compliance with standards	DIN PN10, ANSI 150, BS10/Table D
Removable union nuts:	Female for welding, end-to-end welding, tapped, threaded
Seat:	PTFE
O-ring seals:	EPDM, FKM, FEP/FFKM
Options:	Some flanged valves are available in PVDF ATEX Electric or pneumatic actuated

in UPVC (PolyVinyl Chloride)



Double Union



Compact

SPECIFICATIONS:

Pressure:	PN10
Temperature:	0°C to +60°C
Dimensions:	
2-way:	DN15 to DN100 (1/2" to 4")
Fittings:	
Flanges in compliance with standards	DIN PN10, ANSI 150
Removable union nuts:	for bonding, threaded
Seat:	PTFE
O-ring seals:	EPDM, FKM
Options:	Double union : Electric or pneumatic

in ABS (Acrylonitrile Butadiene Styrene)



Double Union



Double Union 1/2" and 3/4"

SPECIFICATIONS:

Pressure:	PN10
Temperature:	-20°C to +60°C
Dimensions:	
2-ways:	DN15 to DN50 (1/2" to 2")
Fittings:	
Removable union nuts:	for bonding, threaded
Seat:	PTFE
O-ring seals:	EPDM, food grade EPDM, FKM, NBR
Options:	Electric or pneumatic actuated

Diaphragm valves

All our diaphragm valves may be actuated, up to DN65

in PPH (Polypropylene)



For welding
DN15 (1/2")
to DN65 (2 1/2")



Flange fitting
DN15 (1/2")
to DN65 (2 1/2")



Flange fitting
from DN80

SPECIFICATIONS:

Pressure: PN10*
Temperature: 0°C to +90°C
Dimensions: DN15 to DN250 (1/2" to 10")
Fittings:
 Flanges in compliance with standards ... DIN PN10, ANSI/150
 End pieces Male for push-on polyfusion
Diaphragm: EPDM, FKM, PTFE

in PVDF (PolyVinylidene Fluoride)



For welding
DN15 (1/2")
to DN65 (2 1/2")



Flange fitting
DN15 (1/2")
to DN65 (2 1/2")



Flange fitting
from DN80

SPECIFICATIONS:

Pressure: PN10*
Temperature: -20°C to +120°C
Dimensions: DN15 to DN250 (1/2" to 10")
Fittings:
 Flanges in compliance with standards ... DIN PN10, ANSI/150
 End pieces Male for push-on polyfusion
Diaphragm: EPDM, FKM, PTFE

in UPVC (PolyVinyl Chloride)



For bonding
DN15 (1/2")
to DN65 (2 1/2")



Flange fitting
DN15 (1/2")
to DN65 (2 1/2")



Flange fitting
from DN80

SPECIFICATIONS:

Pressure: PN10*
Temperature: 0°C to +60°C
Dimensions: DN15 to DN250 (1/2" to 10")
Fittings:
 Flanges in compliance with standards ... DIN PN10, ANSI/150
 End pieces Male for bonding
Diaphragm: EPDM, FKM, PTFE

* up to DN65 (2 1/2")

Butterfly valves

All our butterfly valves may be actuated

in PPH (Polypropylene)



DN50 to DN150



DN200 to DN250



DN300 to DN600

SPECIFICATIONS:

Pressure: PN10*
Temperature: 0°C to +90°C
Dimensions: DN50 to DN600 (2" to 24")
Fittings:
 Flanges in compliance with standards DIN PN10, ANSI 150
 Control: Manual by lever from DN50 to DN150. By handwheel gearbox from DN200 to DN600
Seals: EPDM, FKM

in PVDF (PolyVinylidene Fluoride)



DN50 to DN150



DN200 to DN250



DN200 to DN600

SPECIFICATIONS:

Pressure: PN10*
Temperature: -20°C to +120°C
Dimensions: DN50 to DN600 (2" to 24")
Fittings:
 Flanges in compliance with standards DIN PN10, ANSI 150
 Control: Manual by lever from DN50 to DN150. By handwheel gearbox from DN200 to DN600
Seals: EPDM, FKM

in UPVC (PolyVinyl Chloride)



DN50 to DN150



DN200 to DN250



DN200 to DN600

SPECIFICATIONS:

Pressure: PN10*
Temperature: 0°C to +60°C
Dimensions: DN50 to DN500 (2" to 20")
Fittings:
 Flanges in compliance with standards DIN PN10, ANSI150
 Control: Manual by lever from DN50 to DN150. By handwheel gearbox from DN200 to DN500
Seals: EPDM, FKM

in CPVC (PolyVinyl Chloride - concentrated)



DN50 to DN150



DN200 to DN250



DN200 to DN600

SPECIFICATIONS:

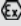
Pressure: PN10*
Temperature: 0°C to +90°C
Dimensions: DN50 to DN600 (2" to 24")
Fittings:
 Flanges in compliance with standards DIN PN10, ANSI 150
 Control: Manual by lever from DN50 to DN150. By handwheel gearbox from DN200 to DN600
Seals: EPDM, FKM

* up to DN150 (6")

Actuators

Pneumatic actuators

SPECIFICATIONS:

- Vane or rack & pinion piston
- Double-acting or single-acting with safety position: normally open or normally closed by lack of air.
- Unit with mechanical or electro-magnetic limit switches
- Regulation positioning with electrical signal 4-20mA or pneumatic signal 0.2 - 1 bar.
- Exists in ATEX 



Vane



Rack & pinion piston

Electrical actuators

SPECIFICATIONS:

- Voltage 12, 24, 48, 110, 220 or 380 V AC single phase or three phase
- Voltage 12, 24 or 48 V DC
- Positioner with signal 4-20mA (option).



Non-return valves

Flap, ball or piston

Piston with spring (SS or hastelloy) available in GRPP or PVDF



DN15 (1/2") to DN20 (3/4")



DN25 (1") to DN50 (2")



Flap, full port, flange fitting, PPH or PVDF
DN25 to DN200



Flap in UPVC, PPH or PVDF (installation between flanges)
DN50 to DN450

Double union ball check valve available in PPH or UPVC (vertical fitting only)
DN15 (1/2") to DN100 (4")



CHARACTERISTICS of the various models:

Models:

- Flap
Fittings / Sandwich installation between:
Flanges in compliance with standards DIN PN10, ANSI 150
- Ball for vertical installation
- Piston for multi-position installation

Materials:

UPVC-PPH-PVDF-GRPP depending on model
O-ring seals: EPDM, FKM

Accessories

Sight glasses

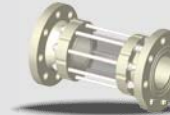
With flanges DIN PN10 and ANSI 150



available in GRPP or PVDF
DN15 and 20



available in PPH or PVDF
DN25 to 65



available in PPH or PVDF
DN15 and 20



available in GRPP or PVDF
DN150

Safety shields

For flanges and for valves, against corrosive projections



Quick unions in GRPP



Fire unions
GUILLEMIN TYPE



Quick unions
CAMLOCK TYPE

Ventilation dampers



DN150 to DN350
in PPH
(6" to 72")
ISO PLATE



DN400 to DN1800
in PPH
(6" to 72")
ISO PLATE

IBC & Tank accessories



Covers

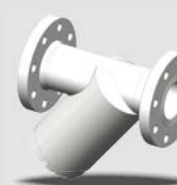
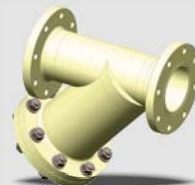


Vent valves



Flexitank valves in PPH

Anti-corrosion strainers



PPH, PVDF
DN125 to DN200
(5" to 8")

Special



Sample pick-off



Storage tanks

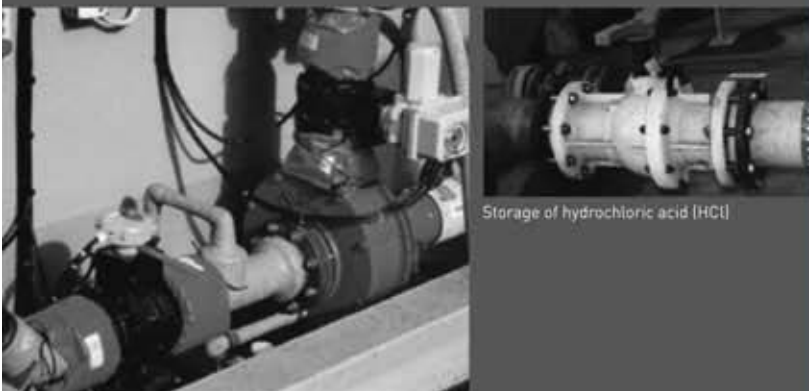


Water treatment

Storage and distribution



Pharmacy



Storage of hydrochloric acid (HCl)

Storage and distribution of hydrochloric acid (HCl)

SAFI LIMITED

35 Holton Road
Holton Heath Trading Park
Poole Dorset - BH16 6LT
UNITED KINGDOM
Tel. +44 (0) 12 02 624 618
Fax +44 (0) 12 02 628 500
sales@safi-valves.com

SAFI DEUTSCHLAND

Kunststoffarmaturen-Vertriebs
GmbH-Jahnstrasse 29
D-64319 Pfungstadt
DEUTSCHLAND
Tel. +49 (0) 6157 8 19 19
+49 (0) 6157 8 20 24
Fax +49 (0) 6157 8 20 25
safi.d@t-online.de

SAFI FÁBRICA DE VÁLVULAS

C/ Carboners, 35
Pol. Ind. La Cometa
E 43700 El Vendrell
ESPANA (Tarragona)
Tel. +34 977 665 147
Fax +34 977 664 989
info@safi-valvulas.com

SAFI LIMITED

PO BOX 3752
Lake Wales - FL 33859
USA
Toll free 888 638 2838
inquiries@safi-valves.com

SAFI AMERICA

Las Garzas Trade Center
Las Garzas # 950, galpón B
Quilicura - Santiago
CHILE
Fono +56 2 510 3500
Fax +56 2 510 3507
info@safi-america.com

SAFI FRANCE

Usine et siège social
26770 Taulignan
FRANCE
Tel. +33 (0) 4 75 53 56 29
Fax +33 (0) 4 75 53 62 78
www.safi-valves.com
info@safi-valves.com

SAFI IDF - CENTRE

ZAE du Chemin Vert
95340 Persan
FRANCE
Tel. +33 (0) 1 34 70 98 87
Fax +33 (0) 1 39 37 01 02
safi-idf@safi-valves.com

SAFI NORD

232, avenue Becquart
59130 Lambersart
FRANCE
Tel. +33 (0) 3 20 09 35 16
Fax +33 (0) 3 20 93 08 17
safi-nord@safi-valves.com

SAFI

26770 TAULIGNAN

FRANCE

Tél. +33 (0)4 75 53 56 29

Fax +33 (0)4 75 53 62 78

info@safi-valves.com

SAFI LIMITED

35 Holton Road

Holton Heath Trading Park

Poole Dorset - BH16 6LT

UNITED KINGDOM

Tel. +44 (0) 12 02 624 618

Fax +44 (0) 12 02 628 500

sales@safi-valves.com

www.safi-valves.com